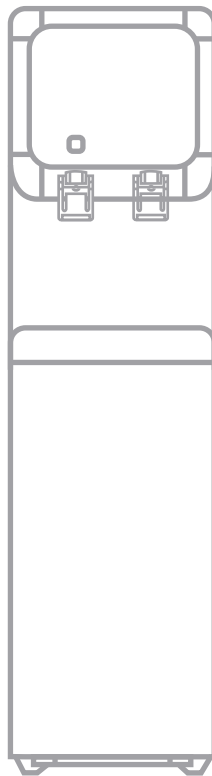




Product Instruction Manual

# Sapphire



**SAP02HC**

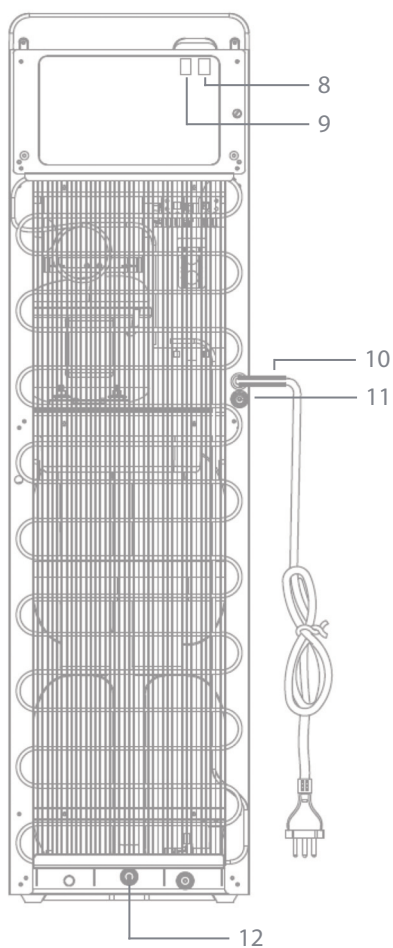
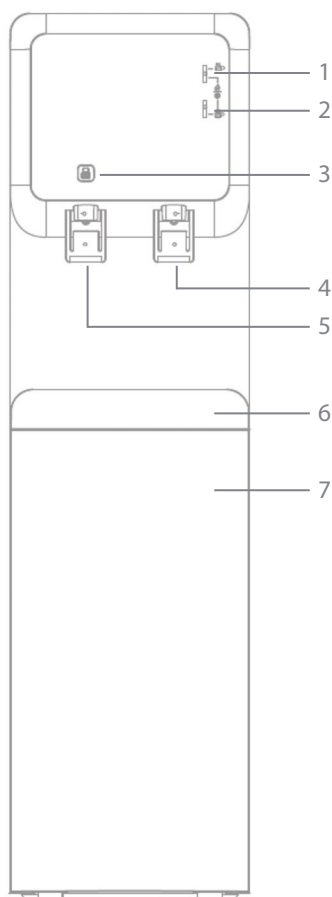
Hot and cold floor standing cooler

**Thank you for purchasing the SAP02HC from our Sapphire range of chilled water products. The SAP02HC provides instant high quality chilled water together with filtered hot water for tea and coffee making. Please read and follow these instructions carefully to ensure that installation and operation is simple and safe.**

## **1. Important safety points**

- Only connect the unit to a single phase supply as specified on the rating plate
- Do not carry the appliance by the supply cord
- The supply cord cannot be replaced by the user. If the cord is damaged the appliance should be returned to the manufacturer or an authorised service agent for replacement
- The unit should be installed with easy access to the electrical plug
- Ensure that water has flowed from the hot water faucet before plugging and switching the appliance on to heat. If the dispenser is turned on with an empty tank it can be damaged
- This appliance should be installed indoors, on a flat surface no less than 15cm from the back wall
- Install the appliance in a dry, well ventilated area; keep the ventilation openings at the back of the unit uncovered and unobstructed
- Do not damage the refrigerant circuit
- This appliance can be used by children aged from 8 years and above and persons with reduced physical, sensory or mental capabilities or lack of experience and knowledge if they have been given supervision or instruction concerning use of the appliance in a safe way and understand the hazards involved. Children shall not play with the appliance. Cleaning and user maintenance shall not be made by children without supervision

- Children should not use the hot tap when unsupervised
- This appliance is intended to be used in household and similar applications such as:
  - staff kitchens areas in shops, offices and other working environments
  - farm houses and by clients in hotels
  - bed and breakfast type environments
  - catering and similar non-retail applications
- If the appliance is not going to be used for a long period of time, unplug it and drain
- Before first use and after a long period of no use, the water tank and pipes should be sanitised
- Connect the unit ONLY to potable (drinking) water.



NO.	NAME
1	Heating indicator light
2	Cooling indicator light
3	Safety lock
4	Cold water tap
5	Hot water tap
6	Drip tray

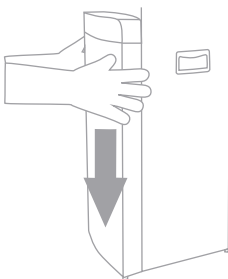
NO.	NAME
7	Access panel
8	Heating switch
9	Cooling switch
10	Power cord
11	Water drainage
12	Water inlet

## 2. Installation

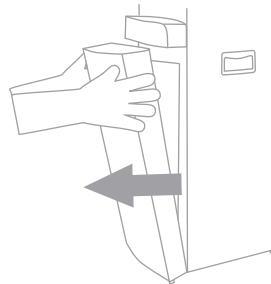
- The unit should be installed with easy access to the electrical plug
- This appliance should be installed indoors, on a flat surface no less than 15cm from the back wall
- Install the appliance in a dry, well ventilated area; keep the ventilation openings at the back of the unit uncovered and unobstructed
- Do not install the heater where the consequences of a leak could be unusually severe
- When choosing a location for the heater, consider the visibility of any leak that might arise. This is particularly important when locating in a concealed area such as a cupboard.

### Plumbing

1. Install the supplied filter and valve kit as shown as per the installation kit instruction sheet provided.
2. A length of tubing (approx. 5m) is provided and can be found inside the unit. To access the tubing you will need to remove the front panel. More tubing can be purchased on request.

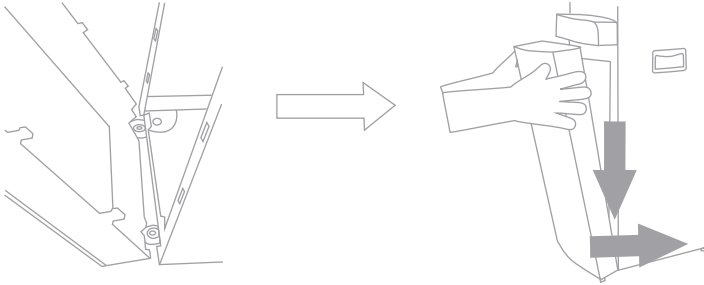


1. Hold the door and press it down



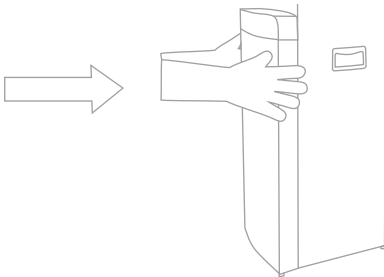
2. Pull the door outwards

To replace the front



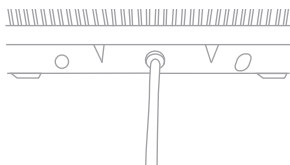
1. Ensure locating pins are lined up at base of unit

2. Push the door downwards and close

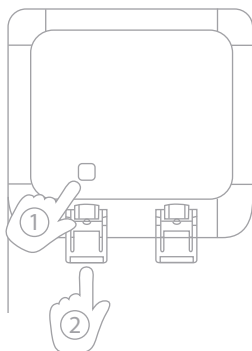


3. The door should “snap” back into place

3. Connect the ¼” plastic tubing provided to the water inlet at the rear of the cooler and connect to the installation kit as per instructions provided.



4. Turn on water supply to the unit and check all connections (including the installation kit) for leaks.
5. BEFORE switching power onto the unit hold down the hot water lock button (1) whilst operating the hot water tap (2) until water flows.



Ensure that water has flowed from the hot water faucet before plugging and switching the appliance on to heat. If the dispenser is turned on with an empty tank it can be damaged.

## Electrical

- Only connect the unit to a single phase supply as specified on the rating plate
- The unit should be installed with easy access to the electrical plug



1. Plug the unit in



2. Turn on the hot and cold switch as required

### 3. Operation

#### Hot water

Turn on the heating switch (red) on the back of the unit. The heating circuit will be switched on and heating power light will illuminate as per Fig 1. When the hot water set point is reached the hot water ready light will illuminate as per Fig 2.



Fig 1.  
Heating



Fig 2.  
Hot water ready

#### Chilled water

Turn on the cooling switch (green) on the back of the unit. The cooling circuit will be switched on and the cooling power light will illuminate as per Fig 3. When the cold water set point is reached the chilled water ready light will illuminate as per Fig 4.



Fig 3.  
Cooling



Fig 4.  
Chilled water ready

### 4. Maintenance

- Before first use and after a long period of no use, the water tank and pipes should be sanitised
- Clean the outside of the unit with a soft damp cloth only, do not use harsh or abrasive chemicals
- To replace the filter in the installation kit, follow the filter instructions provided.
- To remove the drip tray simply pull the drip tray straight up and off, empty and refit the drip tray using the locating pegs



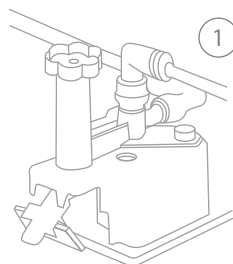
## Leak proof valve

If there are any internal leaks that cause water to pool in the base of the unit, the leak proof valve fitted on the water inlet will operate, closing the water inlet valve and stopping the leak.

- **Softened state of absorbent paper of leak-proof valve**

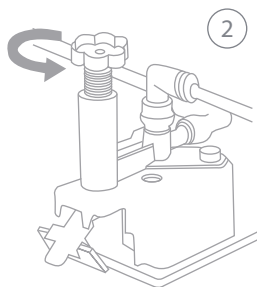
If machine is leaking, the absorbent paper on the leak-proof valve will be softened, causing it to bend, this will cut the water off ① .

You will needed to change the absorbent paper.

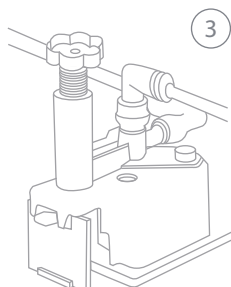


- **Replacement of softened absorbent paper of leak-proof valve**

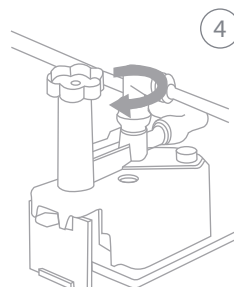
Before replacing new absorbent paper, please check each pipe joint to avoid the possibility of leaking. Then clean the water on the bottom plate and follow below steps to replace absorbent paper.



② Turn off the pressing knob in anticlockwise direction to the middle place of knob.



③ Take out the old absorbent paper and take off the paperclip. Put two new absorbent paper into the clamp, then put it back (th new paper should be between bottom plate slot and handle).



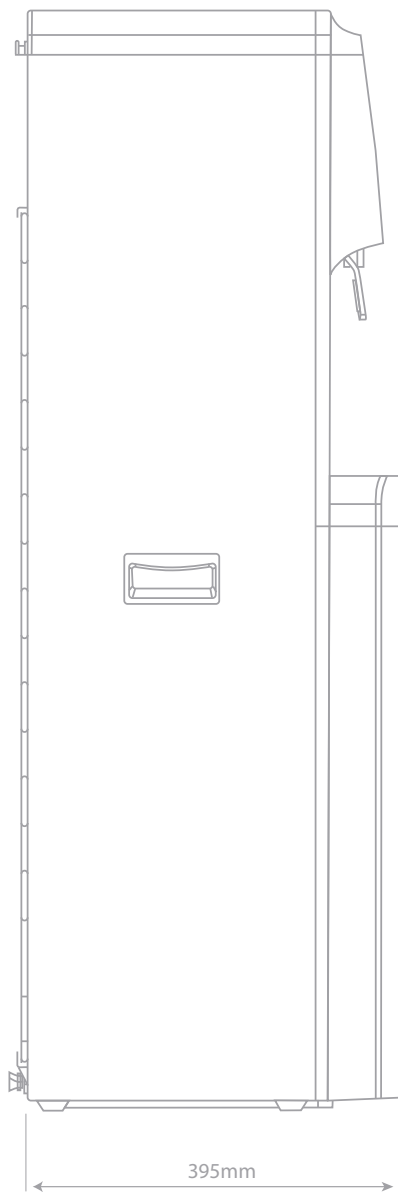
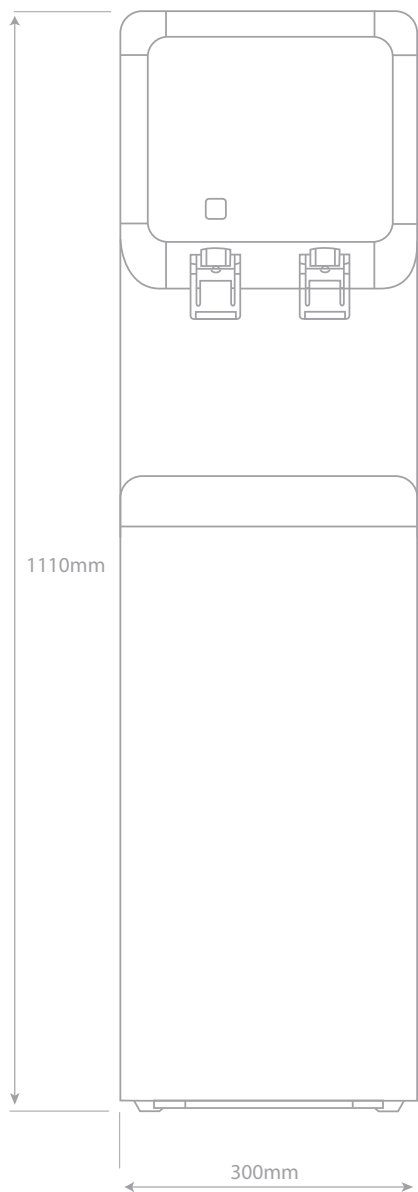
④ Take out the old absorbent paper and take off the paperclip. Put two new absorbent paper into the clamp, then put it back (th new paper should be between bottom plate slot and handle).

Note: A spare replacement absorbent paper should be provided with unit but are available to order on request.

## 5. Specifications

<b>Voltage / Frequency</b>	<b>V~Hz</b>
<b>Heating Power</b>	<b>500W</b>
<b>Cooling Power</b>	<b>85W</b>
<b>Heating capacity</b>	<b>5L/h &gt;90°C</b>
<b>Cooling capacity</b>	<b>2L/h&lt;10°C</b>
<b>Ambient temperature</b>	<b>18-38°C</b>
<b>Pure Water flowrate</b>	<b>&gt;0.5L/min</b>
<b>Working pressure</b>	<b>0.2Mpa-0.35Mpa</b>

<b>Product Code</b>	<b>Description</b>
<b>SAP02_PAPER</b>	<b>Replacement absorbent paper</b>
<b>SAP02_TAP</b>	<b>Replacement Hot &amp; Cold taps</b>
<b>PERT_TUBE</b>	<b>¼" plastic tubing (per metre)</b>





INFORMATION FOR CORRECT DISPOSAL OF THE PRODUCT IN ACCORDANCE WITH THE EUROPEAN DIRECTIVE 2002/96/E.

At the end of its working life this equipment must not be disposed of as household waste. It must be taken to a local authority waste collection centre or to a dealer providing this service. Disposing of electrical and electronic equipment separately enables its components to be recovered and recycled to obtain significant savings in energy and resources. In order to underline the duty to dispose of this equipment separately, the product is marked with a crossed out dustbin.

## 6. Guarantee and service policy

This product is guaranteed against faulty materials and manufacture for a period of one year from the date of purchase. Hyco will in its sole discretion replace, repair or refund any faulty unit. Incorrect installation, consequences of lime scale deposits and failure to follow correct operating instructions are excluded. Consequential costs such as labour charges or damage to surroundings are expressly excluded.

Hyco Manufacturing Ltd  
Normandy Court  
Express Way  
Castleford, WF10 5NR

T 01924 225 200  
F 01924 225 210  
E [sales@hyco.co.uk](mailto:sales@hyco.co.uk)

[hyco.co.uk](http://hyco.co.uk)