

## Product Installation Guide

# Flow Through Valve Kit for Speedflow

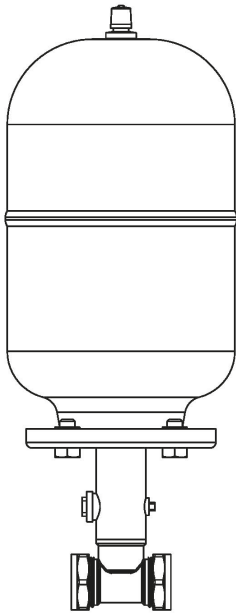


figure 1

Assemble the vessel, t - piece and flow through valve as shown in figure 1.

Screw the flow through valve as far into the t - piece as it will go and then turn back if necessary to achieve the orientation shown.

PTFE tape or similar will be required to seal on the threads of both the vessel and the flow through valve.

Orientation is **important**, the flow through valve water diverter paddle should be at a 90° angle to the tube as shown in figure 2.

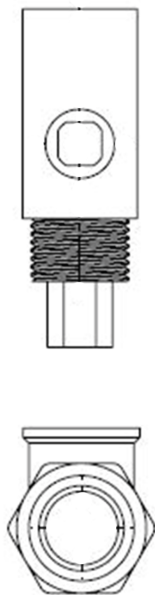


figure 2

