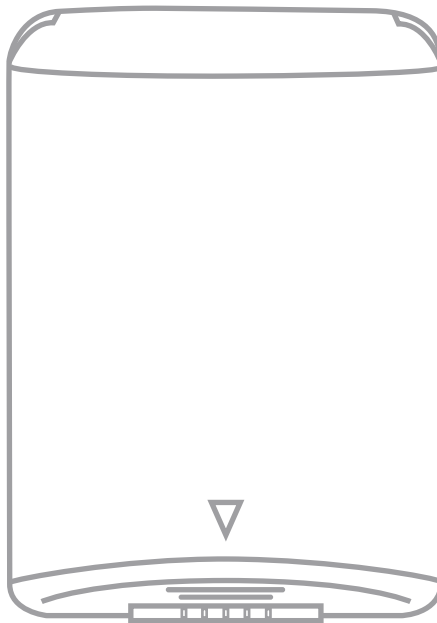




Product Instruction Manual

Ellipse



ELLW (white) & **ELLBSS** (brushed stainless steel)
1.55 kW automatic hand dryer

Thank you for purchasing a Hyco Ellipse hand dryer. Please ensure you read and understand these instructions to ensure safe installation and operation.

The Ellipse is a high speed, automatic hand dryer that offers a stylish and versatile option. This energy efficient hand dryer combines high performance quality with sleek design and will compliment a variety of washroom applications. Fast dry times and low sound levels improve user experience.

Key features

- 1.55 kW
- Energy efficient
- Low noise for sound sensitive environments
- Durable steel construction with enamel coating
- White / brushed stainless steel finish available

1. Important safety points



The Electrical installation must be carried out by a qualified electrician in accordance with the current edition of the I.E.E. Wiring Regulations.



This appliance must be earthed.



Means for electrical disconnection must be incorporated in the fixed wiring in accordance with the wiring rules.



Only connect the hand dryer to a single phase supply with a mains voltage as specified on the rating plate.



This appliance can be used by children aged from 8 years and above and persons with reduced physical, sensory or mental capabilities or lack of experience and knowledge if they have been given supervision or instruction concerning use of the appliance in a safe way and understand the hazards involved. Children shall not play with the appliance. Cleaning and user maintenance shall not be made by children without supervision.



Do not cover the air inlet or outlet.

2. Installation

Wall Mounting



Always ensure no concealed electrical wiring or pipework prior to drilling into the surface.

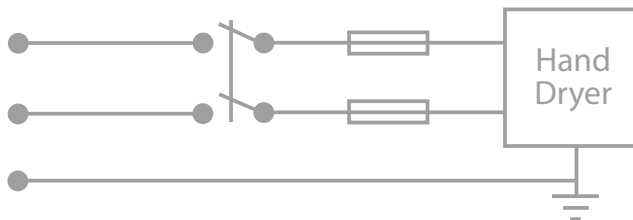
- A template is supplied for the positioning of holes for wall mounting. Attach the template to the final mounting position, mark and drill the holes. Insert the four supplied wall plugs into the holes.

Note: If two or more hand dryers are to be installed, ensure a minimum distance of 610mm between the dryers from centre to centre.

- To remove the cover, take out and discard the card packing piece between the cover and the body of the unit then unscrew the two cover screws using the supplied tool, next pull the cover down to release the lugs at the top of the dryer and then away from the body of the dryer.
- Offer the dryer to the mounting surface and fix it into place inserting the four screws provided into the wall plugs.
- Make the necessary electrical connections (see below) and then replace the cover by reversing the earlier steps. Ensuring the lugs are located at the top of the dryer and the cover screws are firmly in place.

Electrical

- The power cord should be connected following the colour coding below:
 - Brown: L
 - Blue: N
 - Green / Yellow: E

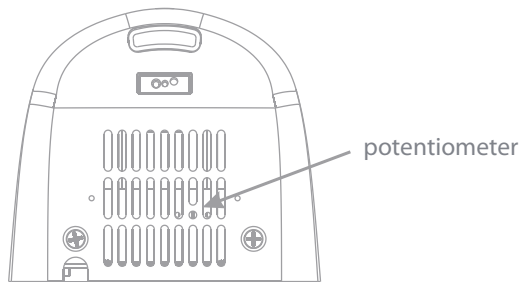


3. Operation

- Shake excess water from hands.
- To activate the hand dryer, place your hands underneath the air outlet and the dryer will operate.
- Move hands slowly back and forth under the dryer, turning over as required, until they are dry.
- The dryer will stop automatically 1 second after removing hands.
- The dryer will automatically cut-out after 1 minute of consecutive use.

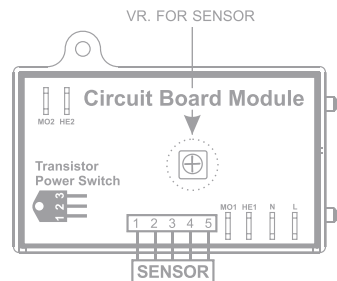
Air speed adjustment

- Gently remove the filter from the unit so the grille is exposed.
- Use a flat bladed screwdriver small enough to access the hole (4.8mm diameter) in the bottom grille. The adjustable potentiometer is visible through the slots of the grille.
- Gently turn the potentiometer clockwise to increase power to maximum (shaft will meet a stop, DO NOT OVERTURN!). Turn the screwdriver gently counter clockwise to reduce power as required.



Sensor adjustment

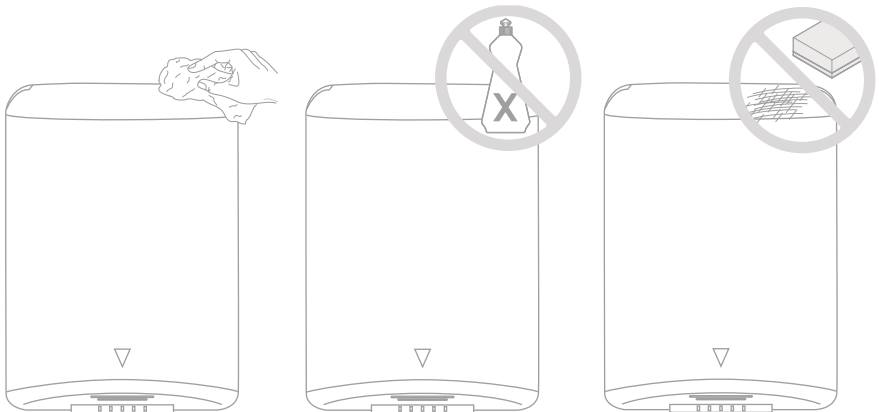
1. The range is 2" to 13" (50mm to 330mm), standard settings is 7" (170mm + 20mm)
2. Clockwise: Increases the sensing range (+) ↻
3. Counterclockwise: decreases the sensing range (-) ↻
4. DO NOT OVERTURN!



4. Maintenance

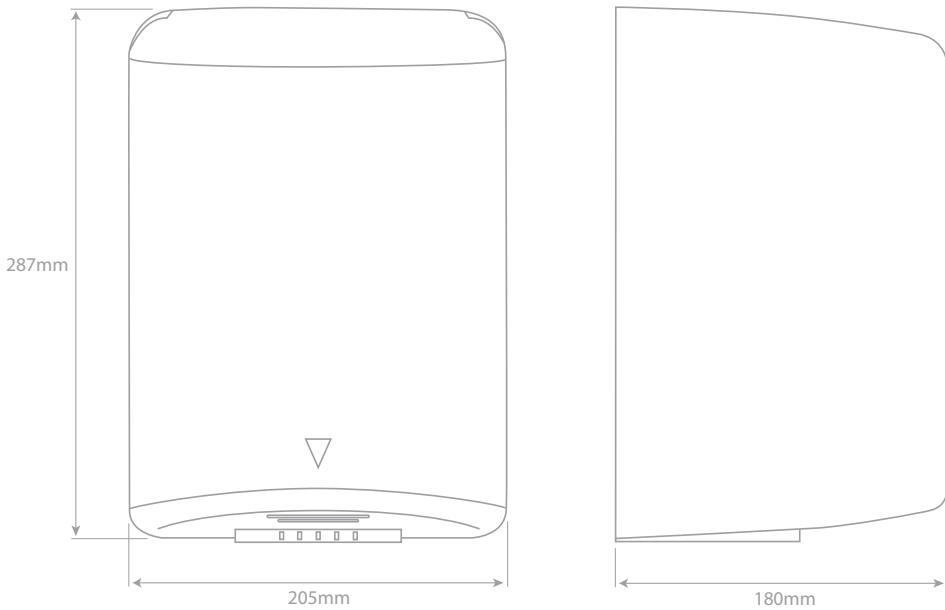
Periodic cleaning of the unit is recommended to ensure optimum performance.

- Disconnect the electrical supply.
- Remove the two cover-mounting screws.
- Remove the cover.
- Clean all dust lint from the interior of the dryer.
- Clean the exterior of the unit using a soft, damp cloth. Do not soak; never use abrasives to clean the cover.
- Replace the cover. Do not overtighten the screws.
- The filter should be removed and rinsed with clean water at regular intervals, ensure it is dry prior to replacement.



5. Specifications

	ELLW	ELLBSS
Voltage/Frequency	230AC/50Hz	230AC/50Hz
Power	1550w	1550w
IP Rating	23	23
Finish	White	Brushed stainless steel
Weight	5.8kg	5.8kg



7. Guarantee and service policy

This product is covered by a standard parts or replacement warranty for a period of three years from the date of purchase.

If there is a manufacturing defect within the warranty period we will send spare parts, repair and return the unit or, at our discretion, supply a replacement product.

Incorrect installation and failure to follow correct operating instructions are excluded. Consequential costs such as labour charges or damage to surroundings are expressly excluded.

Contact us

If you experience a problem with this product you should first contact our service department on 01924 225 200 before taking any further action. Experience has shown that issues can often be resolved without the need to return or uninstall the product.



INFORMATION FOR CORRECT DISPOSAL OF THE PRODUCT IN ACCORDANCE WITH THE EUROPEAN DIRECTIVE 2012/19/EU.

At the end of its working life this equipment must not be disposed of as household waste. It must be taken to a local authority waste collection centre or to a dealer providing this service. Disposing of electrical and electronic equipment separately enables its components to be recovered and recycled to obtain significant savings in energy and resources. In order to underline the duty to dispose of this equipment separately, the product is marked with a crossed out dustbin.

Hyco Manufacturing Ltd
Normandy Court
Express Way
Castleford, WF10 5NR

T 01924 225 200
F 01924 225 210
E sales@hyco.co.uk

hyco.co.uk