



## Product Installation Guide

### CPURE

# Crystal Pure

Can be fitted into any existing hole (up to a max of 35mm diameter and up to 45mm thickness).

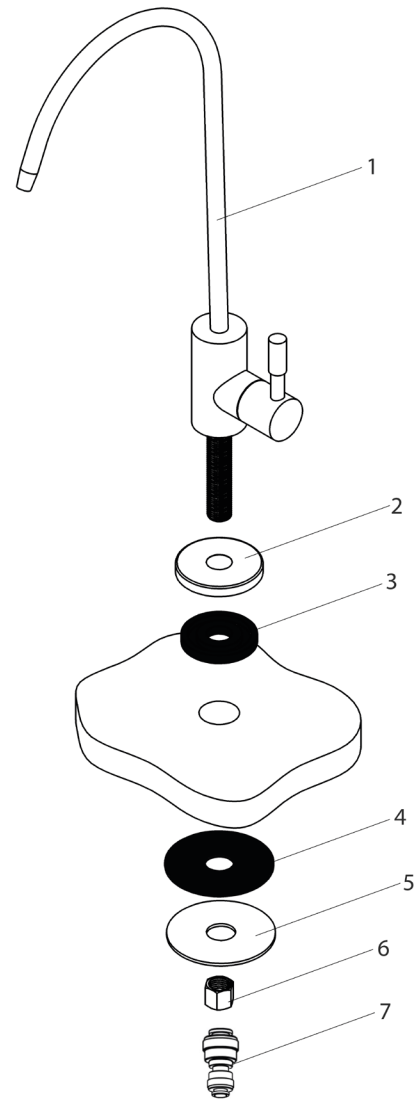
If a new hole is required, the tap can be fitted into a minimum 12mm diameter hole.

Take the tap and tap base (including the large black rubber washer) and insert into the hole of the mounting surface.

Ensure tap is in the desired orientation.

On the underside of the mounting surface place the large black rubber washer followed by the large steel washer over the thread before using the hex nut to fix the tap firmly into place.

The push fit pipe connector will facilitate connection to 1/4" tubing (supplied with filter).



- 1 Tap body
- 2 Tap base
- 3 Large black rubber washer
- 4 Large black rubber washer
- 5 Large steel washer
- 6 Hex nut
- 7 Push fit pipe connector

